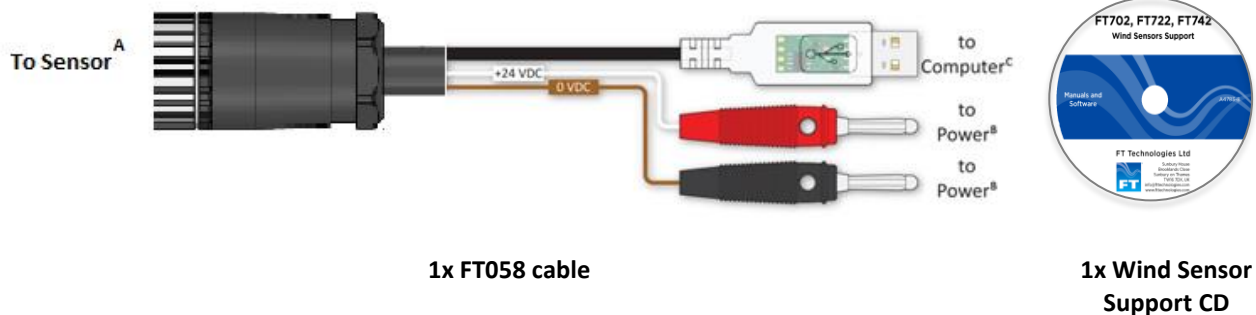




Acu-Test for SM (RS422)

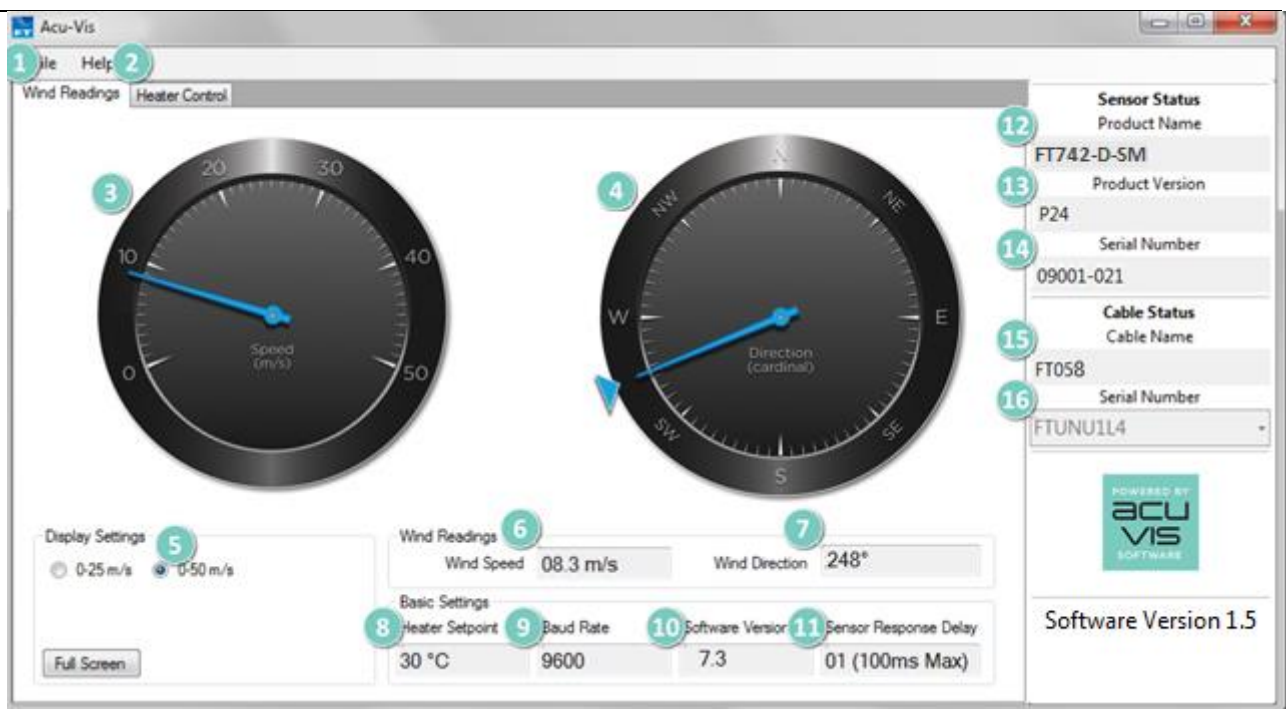
FT Technologies Test Equipment makes it easy to test and evaluate the output of FT742-D-SM (RS422) wind sensors. The Acu-Test SM (RS422) pack is made-up of the FT058 cable and the FT Acu-Vis software.

INCLUDED IN THE PACK



Each cable is labelled with a unique serial number and build date to ensure quality and traceability.

ACU-VIS SOFTWARE

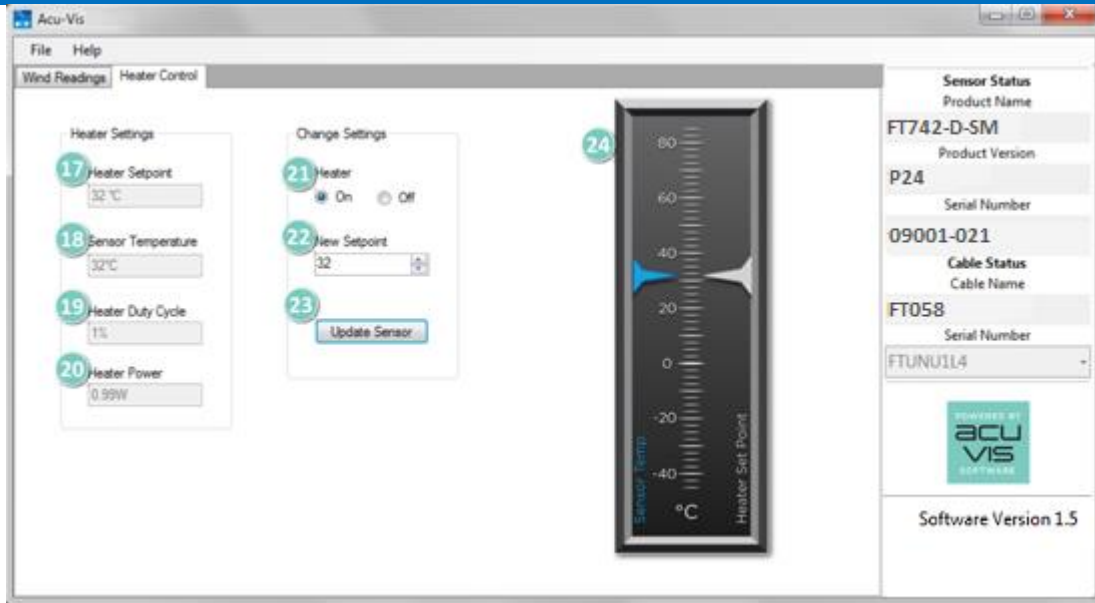


Above - Screen shot with sensor 09001-021 connected, on "Wind Reading" tab

1. "Wind Reading" Tab – live readings from sensor
2. "Heater Settings" Tab
3. Wind Speed Dial
4. Wind Direction Dial
5. Wind Speed Dial Range Selection
6. Wind Speed (numeric)
7. Wind Direction (numeric)
8. Current Heater Setpoint
9. Sensor Communication Baud Rate
10. Software Version on Sensor
11. Sensor Response Delay – user defined
12. Product Name – of attached sensor
13. Product Version – of attached sensor
14. Serial Number – of attached sensor
15. Cable Name – type of attached cable
16. Serial Number – of attached cable



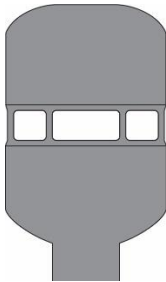
Acu-Test for SM (RS422)



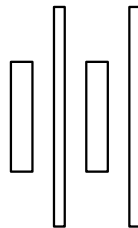
Above - Screen shot with sensor 09001-021 connected, on “Heater Control” tab

- 17. Heater Setpoint – Currently applied to the sensor
- 18. Sensor Temperature – Sensor’s internal temperature
- 19. Heater Duty Cycle – Current % of max. heater power
- 20. Heater Power – Estimate of heater power
- 21. Select to enable/disable sensor heaters
- 22. New Desired Heater Setpoint
- 23. Update Sensor – Load new heater settings to sensor
- 24. Temperature gauge

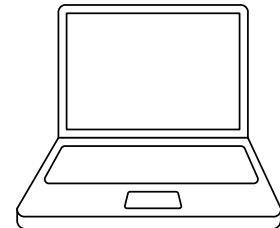
YOU WILL ALSO NEED



Sensor^A



Power Source^B



Computer^C

- A. This equipment can only be used to test the FT742-D-SM (RS422) wind sensor.
- B. Use a bench power supply unit, 6-30 VDC (2A min.), Rechargeable Battery or +24 VDC Laptop charger.
- C. Acu-Vis software will run on Window XP, Vista, Windows 7, Windows 8 or Windows 10 computers.

Warning: Live connection/disconnection of the power and/or sensors during live operation, or miswiring of the power leads could damage the equipment and is not covered by FT’s standard warranty terms.

KEEPING IT SIMPLE

This software is to be used as a simple way to test the wind speed and direction functionality of an FT Technologies digital output wind sensor. If you have any further software requirements, please contact us and we will be happy to discuss your needs in more detail.

The Acu-Test SM (RS422) pack is available from sales@fttechnologies.com +24 VDC Laptop charger (available on request).

Information furnished by FT Technologies Ltd is believed to be accurate and reliable. However no responsibility is assumed by FT Technologies Ltd for its use; nor for any infringements of patents or other rights of third parties which may result from its use. No licence is granted by implication or otherwise under any patent rights of FT Technologies Ltd.

FT Technologies Ltd Sunbury House, Brooklands Close, Sunbury-on-Thames, TW16 7DX, UK. Tel:+44(0)20 8943 0801 Fax:+44(0)20 8943 3283 E-mail: sales@fttechnologies.com Web: <http://www.fttechnologies.com>